

XJET® CONCEPT



XJET® CONCEPT

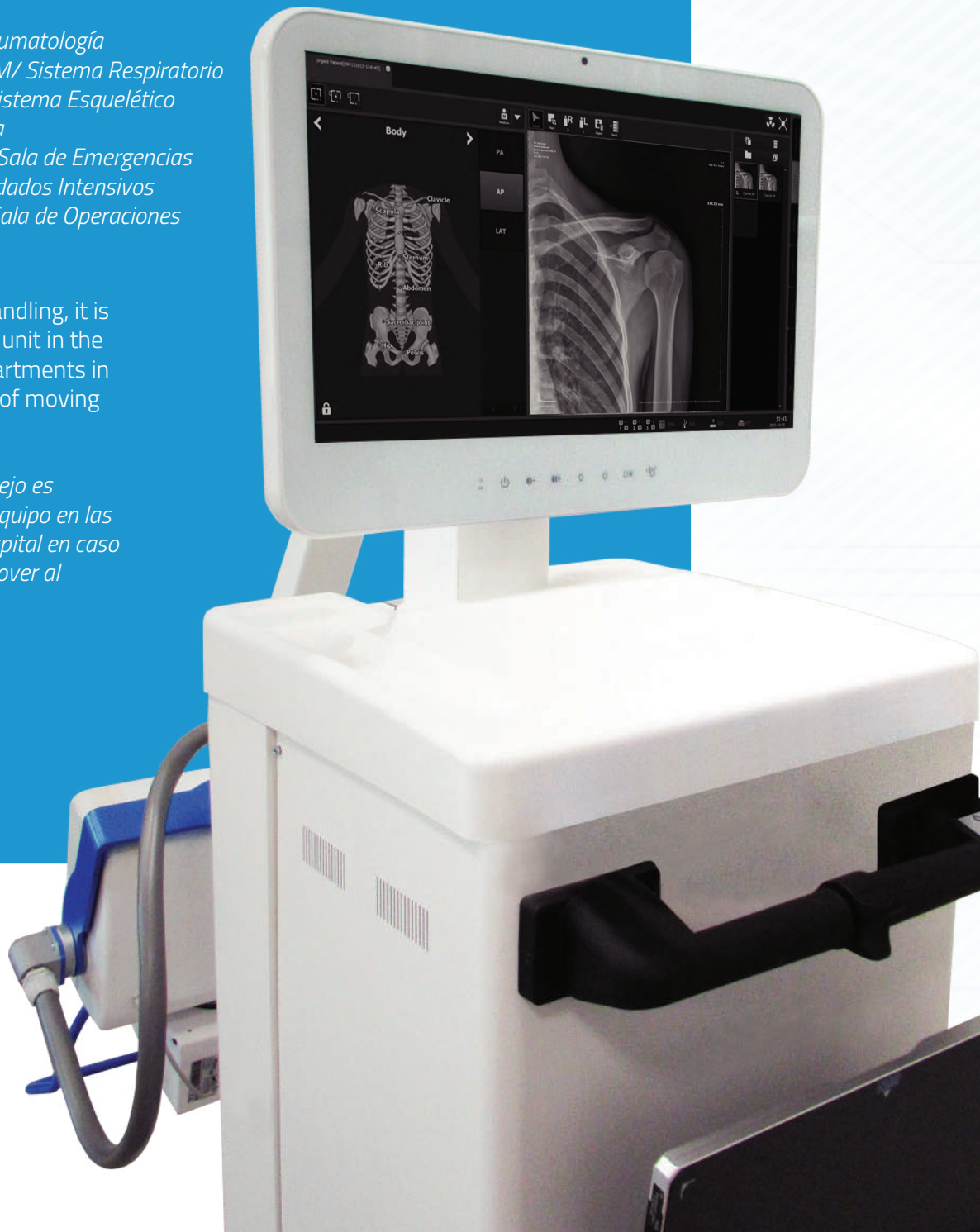
XJET is a mobile radiographic unit, designed for excellent performance capacity and responsiveness to the operative features in the field of general radiology, and especially in the following departments:

XJET es una unidad de rayos X móvil diseñada con excelentes capacidades de rendimiento y capacidad de respuesta a las características operativas en el campo de la radiología general, y en particular en los campos de:

*TRAUMATOLOGY/ Traumatología
RESPIRATORY SYSTEM/ Sistema Respiratorio
SKELETAL SYSTEM/ Sistema Esquelético
PEDIATRICS/ Pediatría
EMERGENCY ROOM/ Sala de Emergencias
INTENSIVE CARE/ Cuidados Intensivos
OPERATING ROOM/ Sala de Operaciones*

Thanks to its easy handling, it is possible to place the unit in the various hospital departments in case of impossibility of moving the patient.

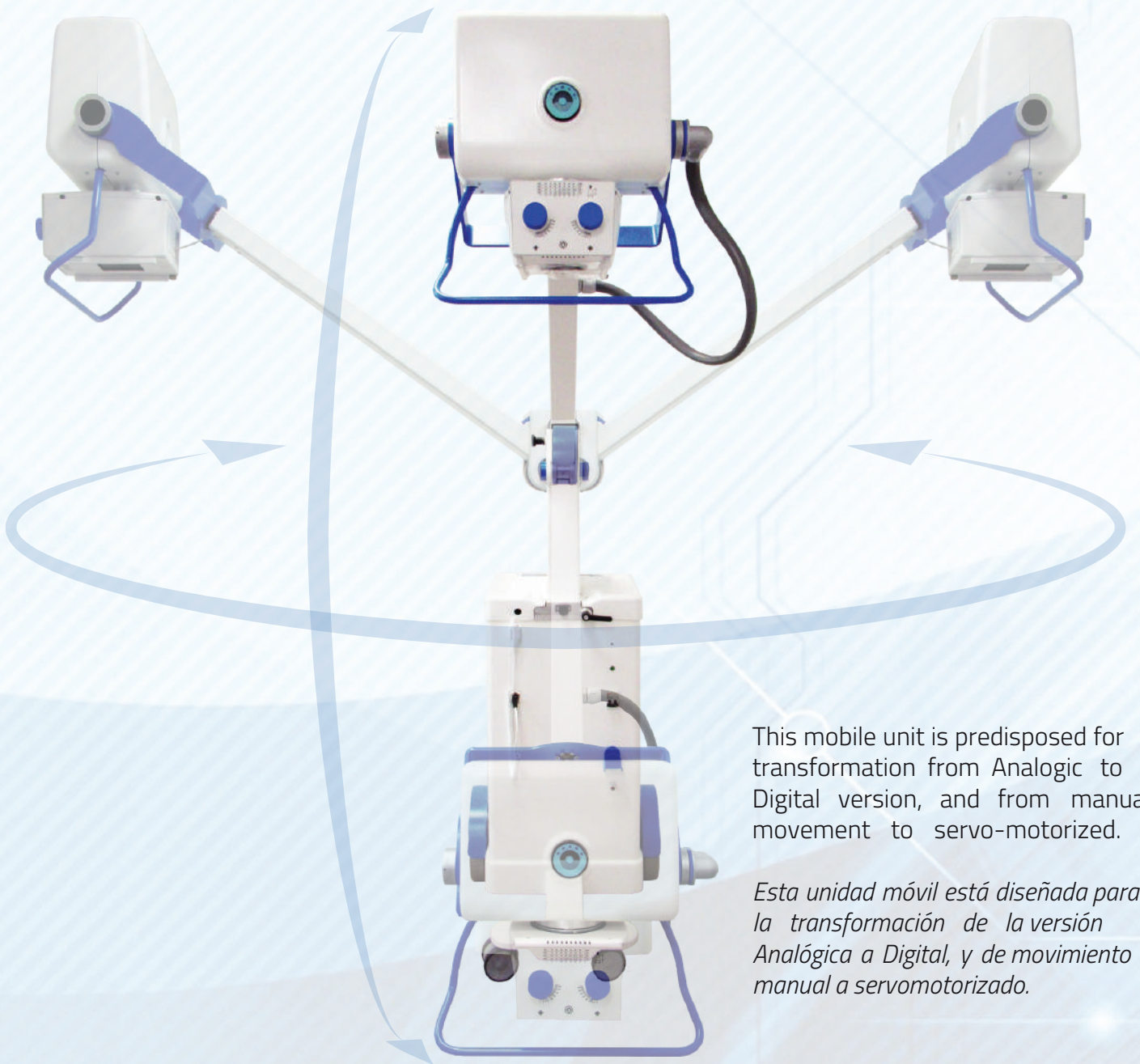
Gracias a su fácil manejo es posible posicionar el equipo en las distintas salas del hospital en caso de imposibilidad de mover al paciente.



XJET® CONCEPT

The XJET unit is available in powers 4KW÷50KW and in different configurations:
La unidad móvil XJET está disponible en potencias de 4 KW÷50KW y en diferentes configuraciones:

*ANALOGIC/Analógico
DIGITAL/Digital*



This mobile unit is predisposed for transformation from Analogic to Digital version, and from manual movement to servo-motorized.

Esta unidad móvil está diseñada para la transformación de la versión Analógica a Digital, y de movimiento manual a servomotorizado.

XJET® CONCEPT



The digital version is equipped with a Wi-Fi panel detector 14x17(35x43) which is directly connected with a system of image acquisition. The use of the panel assures excellent results in terms of resolution and image quality.

La versión digital está equipada con un panel detector Wi-Fi de 14x17 (35x43) conectado directamente a un sistema de adquisición de imágenes.

El uso del panel garantiza excelentes resultados en términos de resolución y calidad de imagen.

The standard panel detector is the WIRELESS model 14"x17" (35x43cm). As option 17"x17" (43x43cm).

Medical PC Panel of 19" as option 22"

El panel detector estándar es el modelo WIRELESS 14"x17" (35x43cm). Opcional 17x17" (43x43cm)

Panel de PC médico de 19" Opcional 22"

TECHNICAL FEATURES**FLAT PANEL SATURN 8000 14x17 WIRELESS**

Application	General radiography
Technology	a-Si TFT with photodiode: a-Si TFT with PIN diode
Scintillator Type	CsI (VAW: High MTF type), CsI (VAW PLUS: High DQE type)
Pixel Pitch	140um x 140um
Pixels	2,560 x 3,072 pixels
Active Area	358.4 x 430.08 (mm)
A/D Conversion	14 bit
Grayscale	16,384 steps
X-ray voltage range	40 ~ 150kVp
X-ray generator Interface	Line trigger : DR Trigger Mode Auto trigger : AED (Automatic Exposure Detection) Mode
Wireless Interface	IEEE 802.11a/b/g/n (2.4GHz/5GHz dual band)
Dimensions	460 (W) x 384 (L) x 15 (T) mm
Weight	Approx. 3.3kg (GADOX) / 3.4kg (CsI)
Operating Environment	Operational temperature: Min 0°C - Max 40°C Operation Humidity: Min 5% RH Max 90% RH
Power	DC24V, 0.5A (Wired Mode) / 7.4V 4,000mAh Lithium Ion Polymer Battery
Drop height	1m
Ingress Protection Rating	IP67
Battery	Built-in battery exchangeable
Battery Operating Time	stand by 8h
Load Limit	uniform load 400kg, local load 200kg
Operation shock & vibration	20g - 2G
Storage & Transport Shock & vibration	30g - 5G



TECHNICAL FEATURES

	XJET 4KW FIXED ANODE	XJET 6KW FIXED ANODE
input voltage	115/230Vac single phase standard $\pm 10\%$	115/230Vac single phase standard $\pm 10\%$
maximum output power	4KW (100 kV - 40mA - 100mS)	6KW (100 kV - 60mA - 100mS)
frequency	40 kHz Fixed	40 kHz Fixed
kV range	40 ÷ 110kV (120 kV OPT) in step of 1kV	40 ÷ 110kV (120 kV OPT) in step of 1kV
mA range	25 - 100 mA associated automatically to kV	25 - 125 mA associated automatically to kV
mAs range	0.2 ÷ 320	0.2 ÷ 320
operating methods	2/3 points technique	2/3 points technique
exp. Time range	2 ms ÷ 6.3 sec in reason of mAs set	2 ms ÷ 6.3 sec in reason of mAs set

TECHNICAL FEATURES

	XJET 8KW FIXED ANODE	XJET 16KW ROTATING ANODE
input voltage	115/230Vac single phase standard $\pm 10\%$	115/230Vac single phase standard $\pm 10\%$
maximum output power	8KW (100 kV - 80mA - 100mS)	16KW (100 kV - 160mA - 100mS)
frequency	40 kHz Fixed	40 kHz Fixed
kV range	40 ÷ 110kV (120 kV OPT) in step of 1kV	40 ÷ 125 kV (130 kV OPT) in step of 1kV
mA range	25 - 200 mA associated automatically to kV	50 - 400 mA associated automatically to kV
mAs range	0.2 ÷ 320	0.2 ÷ 320
operating methods	2/3 points technique	2/3 points technique
exp. Time range	2 ms ÷ 6.3 sec in reason of mAs set	1 ms ÷ 6.3 sec in reason of mAs set

TECHNICAL FEATURES

	XJET 32KW ROTATING ANODE	XJET 40KW ROTATING ANODE
input voltage	115/230Vac single phase standard $\pm 10\%$	115/230Vac single phase standard $\pm 10\%$
maximum output power	32KW (100 kV - 320mA - 100mS)	40KW (100 kV - 400mA - 100mS)
frequency	40 kHz Fixed	40 kHz Fixed
kV range	40 ÷ 125kV (130 kV OPT) in step of 1kV	40 ÷ 125kV (130 kV OPT) in step of 1kV
mA range	50 - 500 mA associated automatically to kV	50 - 630 mA associated automatically to kV
mAs range	0.2 ÷ 320	0.2 ÷ 320
operating methods	2/3 points technique	2/3 points technique
exp. Time range	1 ms ÷ 6.3 sec in reason of mAs set	1 ms ÷ 6.3 sec in reason of mAs set

TECHNICAL FEATURES

	XJET 50KW ROTATING ANODE
input voltage	115/230Vac single phase standard $\pm 10\%$
maximum output power	50KW (100 kV - 500mA - 100mS)
frequency	40 kHz Fixed
kV range	40 ÷ 125kV (130 kV OPT) in step of 1kV
mA range	50-800 mA associated automatically to kV
mAs range	0.2 ÷ 320
operating methods	2/3 points technique
exp. Time range	1 ms ÷ 6.3 sec in reason of mAs set

XJET® CONCEPT

This X-ray equipment product line is perfectly suited to high-quality radiographs. Our systems are the most appropriate answer to the various questions in the X-ray field.

Esta línea de productos se adapta perfectamente a las radiografías de alta calidad. Nuestros sistemas cumplen adecuadamente con los requisitos en el campo de la radiología.



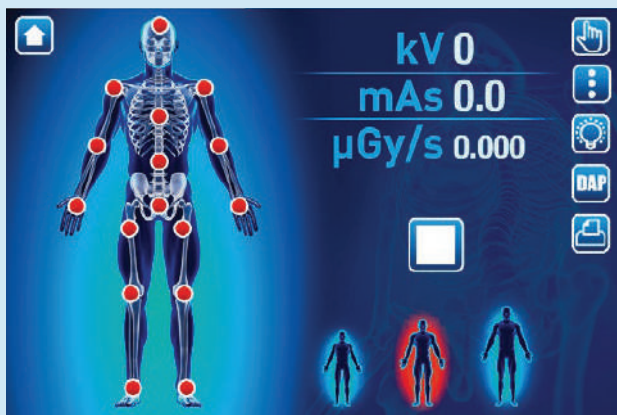
XJET[®] CONCEPT

All configurations can
be motorized

*Todas las configuraciones
pueden motorizarse*

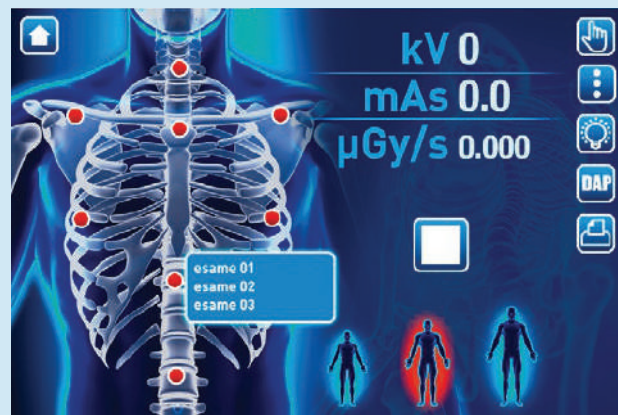
 MediSono





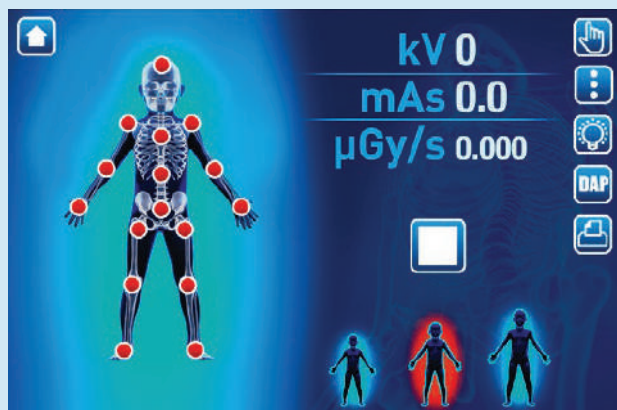
Colour Touch screen 9", control technology with various languages.

Pantalla táctil a color de 9" con varios idiomas.



Dynamic anatomic configuration, with thousands possible combinations.

Configuración anatómica dinámica con miles de combinaciones posibles.

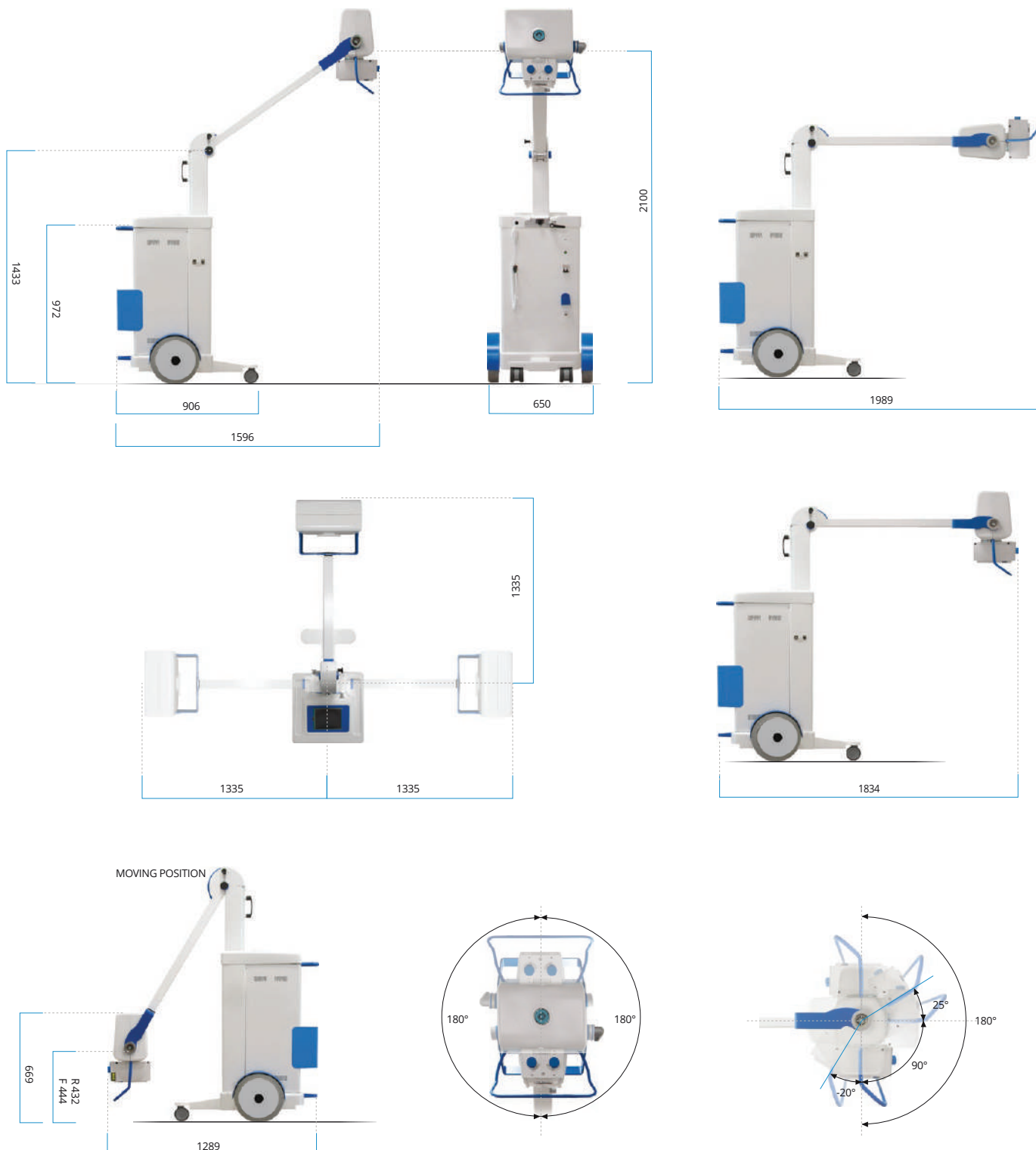


Supported two and three point radiological parameters. DAP Predisposition.

Soporta parámetros radiológicos con tecnología de 2 y 3 puntos predisposición DAP.

XJET® CONCEPT

MECHANICAL SIZES - *DIMENSIONES MECÁNICAS*



Weight range: 250 kg ÷ 285 kg - *Rango de peso: 250 kg ÷ 285 kg*



Monobloc type Tube:

Fixed and rotating anode
Fixed anode 4-6-8-KW
Rotating anode 16-32-40-50KW



T° Constant monitoring of the monobloc temperature

Fixed and rotating anode
Fixed anode 4-6-8-KW
Rotating anode 16-32-40-50KW



High frequency Generator

40kHz



Wi-Fi connection

digital panel



Ergonomic mechanics



USB connection upgrade

SW & FW



OPTIONAL

Full DICOM compliance
CD/DVD (only for digital)
DAP (dosimeter)



Medisono LLC - 3016 NW 82nd Ave, Doral, 33122 Florida USA / +1 (305) 406-3931
info@medisono.com